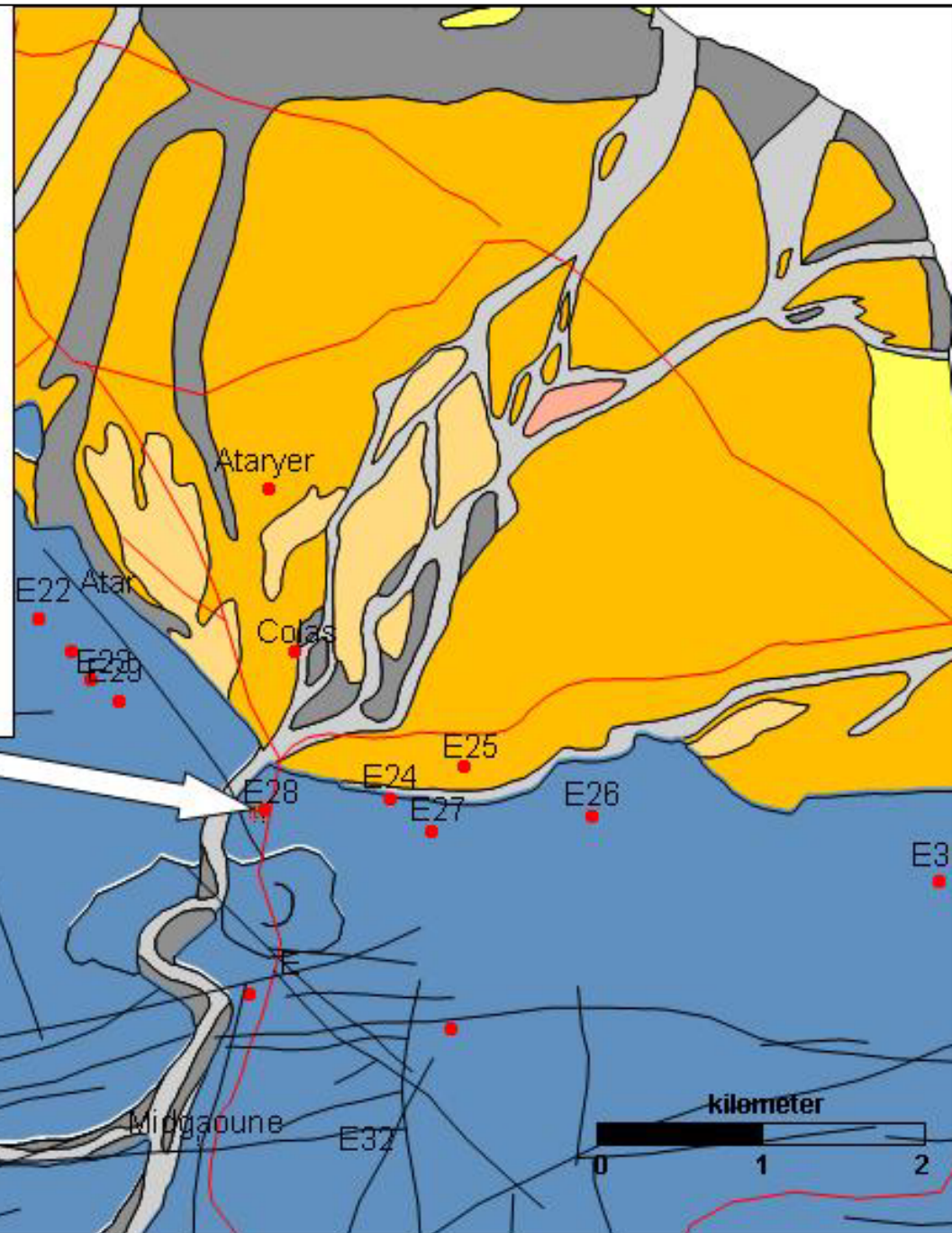
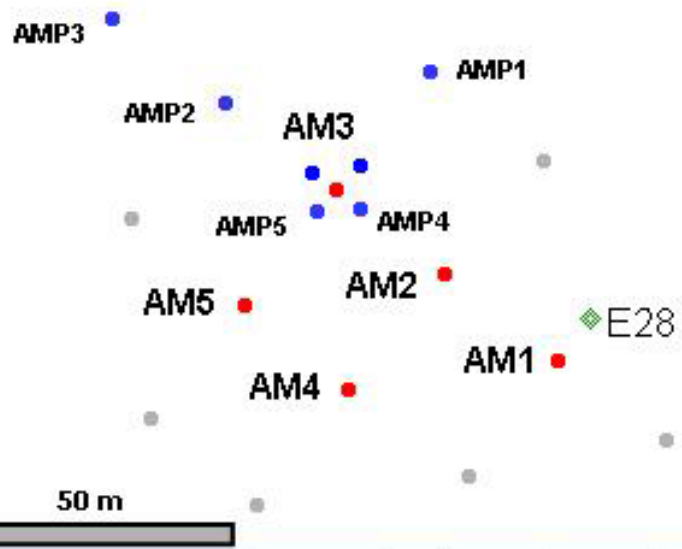


- 10" piezometers (AM)
- 2" piezometers (AMP)
- Programmed piezometers
- ◆ Old well



**LEGEND**

- |                    |                          |
|--------------------|--------------------------|
| ■ Eolian sand      | ■ Coral limestone        |
| ■ Actual alluvium  | ■ Pleistocene alluvium   |
| ■ Actual terrasses | ■ Gulf basalt (3.4-1 MA) |
| ■ Recent alluvium  | ■ Volcanic cone          |