

MAWARI PROJECT (Kenya, Ethiopia, Djibouti): Management of Water in the Rift valley



UNIVERSITY OF ADDIS ABABA

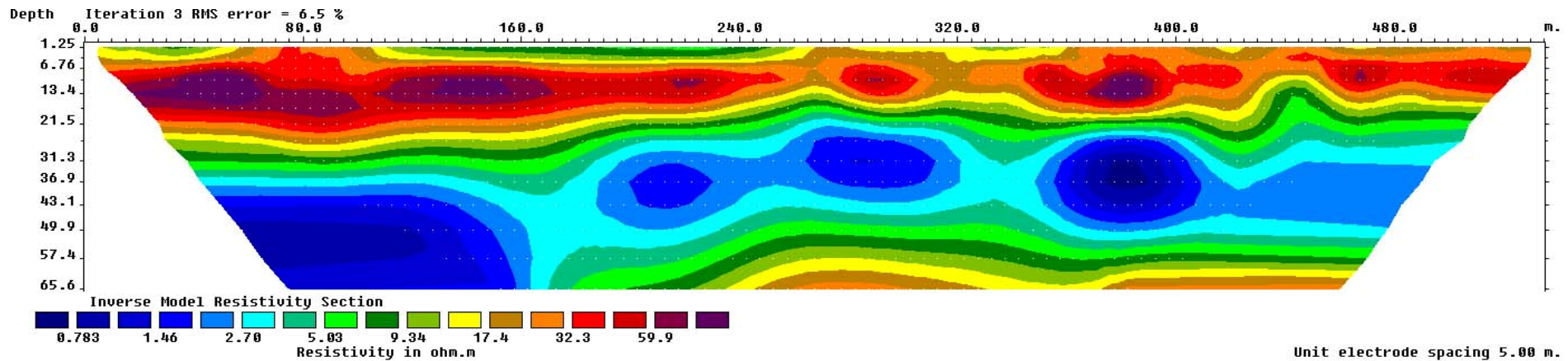
Dr Tigistu HAILE

**ACQUISITION OF A RESISITVY
TOMOGRAPHY EQUIPEMENT:
SYSCAL R1 Plus Switch 72,
with 72 electrodes, 5m spacing**

**TRAINING IN METAHARA, Sept 1-6, 2008
12 trainees from Universities,
Geological Survey, Water Administrations**



MAWARI PROJECT, ETHIOPIA



MEASUREMENTS ON LAKE BESEKA SHORE, CLOSE TO METAHARA CITY:

searching connections between the groundwater and the lake, which regularly increases of volume

Water resistivity of the lake: about 2 ohm.m (conductivity: 5 mS/cm)

Electrode array: Wenner-Schlumberger, with 1 main sequence (360m) + 2 roll-along sequences (90m each)

Total profile length = 540m, including 1200 readings

